

IBT[®]

IBT INSTITUTE PVT. LTD

Call:-94636-12090,0181-4606260

Student Name:-

INDIA POST PAYMENTS BANK

SCALE-I-OFFICER (MOCK TEST - I)

INSTRUCTIONS

Total Time-60 Minutes

No. of Questions-100

Total Marks-100

1. Each question carries one mark.
2. Do not use any pager, ruler, calculator or any electronic gadget while attempting the paper,violating the same would result in the cancellation of your paper.
3. DO NOT OPEN THE BOOK-LET UNLESS INSTRUCTED TO DO SO.
4. There will be a penalty of 1/4th of every wrong answer marked. Only one answer will be acceptable for a question .In case student marks more than one answer for the same question , that shall be considered a wrong answer by the electronic OMR scanner.
5. Do not leave the hall untill instructed to do so.OMR score sheets have to be deposited ,test paper & answer key can be taken away.

NOTE :- USE ONLY BLUE/ BLACK BALL PEN TO FILL OMR SHEET.

To download this Mock Test Solution please visit www.ibtindia.com or use IBT ANDROID APP.

Why IBT?

History

- Inception in 2009 by Group of Professionals & Bankers
- ISO 9001:2008 Certified Institute
- Pioneer in Bank/SSC & other Govt. Exams Coaching

Advantage

- 100+ Centers Across India
- Experienced Faculty Members Including Bankers
- G.K Classes by IAS Faculties & Online Mock Test Facility

Selections

- 8000+ Selections in Last 1 Year
- 13500+ Selections in SSC/FCI/LIC & State Jobs
- 4500+ Selections in IBPS PO-Mains-2015

Choose IBT

Course Material

- Comprehensive Course Material for all subjects in Hindi & English
- Contains Solution Books/Work Book.

Online Examination

- Online Test Series For All Competitive Exams
- Bank PO/CLERK/MBA & other exams
- Complete Review & Analysis / National Level Percentile

Monthly Magazine

- Last 6 Month's Current Affairs / Banking Awareness
- G.k One Liner Questions / Information about Upcoming Exams

HEAD OFFICE:- PUNJAB AIR TOWER,OPP.BUS STAND GATE NO. 3 JALANDHAR
CALL:-94636-12090,0181-4606260

IPPB OFFICER SCALE - I (PRE) MOCK TEST – 1

TOTAL TIME:- 60 MINS

REASONING ABILITY

Direction (Q. 1-5): In these questions, a relationship between different elements is shown in the statements(s). The statements are followed by two conclusions. Give answer

- (A) If only conclusion I is true.
 (B) If only conclusion II is true.
 (C) If either conclusion I or II is true.
 (D) If neither conclusion I nor II is true.
 (E) If both conclusions I and II are true.

1. Statements :

$A > B \geq C < D, C = E > G$

Conclusions :

I. $D > E$ **II.** $B > E$

2. Statements :

$P \leq Q > M \geq N, Q = S$

Conclusions :

I. $S > P$ **II.** $N < S$

3. Statements :

$S > M = Z > T < Q > V$

Conclusions :

I. $V = S$ **II.** $Q > M$

4. Statements :

$T < U = V \leq S > P \geq Q$

Conclusions :

I. $S > T$ **II.** $V \geq Q$

5. Statements :

$M \geq N > R > W, E = J > L \geq W$

Conclusions :

I. $E > W$ **II.** $M > L$

Direction (Q. 6-10): Study the following information carefully and answer the given questions:

Seven persons Ajay, Aakash, Ankit, Amit, Anupam, Avinash and Anurag conduct workshop on personality development in seven different companies A, B, C, D, E, F and G on a different day of the week from Monday to Sunday. The order of persons, companies and days of the week are not necessarily the same.

Aakash organizes workshop in Company D on Wednesday. Amit does not conduct workshop for

companies A or C and conducts workshop on the next day of the day on which Anupam conducts the workshop and he conducts workshop for Company F. Avinash conducts workshop for Company E on Friday. Anurag conducts workshop on Monday but not for Company C or G. Ankit conducts workshop for Company A but not on Tuesday.

6. Who conducts workshop on Saturday?

- (A) Ankit
 (B) Amit
 (C) Anupam
 (D) Amit or Anupam
 (E) None of These

7. On which day does Amit conduct the workshop?

- (A) Sunday
 (B) Saturday
 (C) Tuesday
 (D) Cannot be determined
 (E) None of These

8. Ankit conducts workshop on which day?

- (A) Saturday (B) Sunday
 (C) Tuesday (D) Thursday
 (E) None of These

9. Which of the following combinations of person-company and day is correct?

- (A) Anurag – B – Wednesday
 (B) Ajay – B – Monday
 (C) Anurag – C – Monday
 (D) Anurag – G – Sunday
 (E) None of These

10. Who conducts workshop for Company C and on which day?

- (A) Ajay, Thursday
 (B) Ajay, Tuesday
 (C) Amit, Saturday
 (D) Amit, Sunday
 (E) None of These

Direction (Q. 11–15): Study the following information carefully and answer the given questions:

Arpit, Arjit, Raman, Anil, Ravi, Ritesh and Rohit are seven friends. They play three types of games, viz Snooker, Ice hockey and Table tennis. Each game is played by at least two players. Each one of them has a favorite car, viz Honda, Fiat, Ferrari, Benz, Etios, Swift and Beleno, but not necessarily in the same order.

Arjit likes Etios and does not play Table tennis. The one who likes Beleno plays the same game as Ravi. Raman likes Fiat and plays the same game as Rohit. Anil plays Ice hockey only with the one who likes Honda. Rohit plays neither Ice hockey nor Table tennis. Ritesh does not like Beleno. Rohit likes neither Benz nor Ferrari. Anil does not like Benz. Ravi does not like Honda.

11. Which of the following groups plays Snooker?

- (A) Arjit, Rohit
 (B) Arpit, Arjit, Raman
 (C) Arjit, Raman, Rohit
 (D) Anil, Rohit, Arjit
 (E) None of these

12. Who likes Ferrari Car?

- (A) Arpit (B) Rohit
 (C) Ritesh (D) Anil
 (E) None of these

13. Which of the following cars does Arpit like?

- (A) Ferrari (B) Beleno
 (C) Honda
 (D) Either Beleno or Swift
 (E) None of these

14. Which of the following combinations is true ?

- (A) Arpit–Beleno–Table tennis
 (B) Rohit–Honda–Table tennis
 (C) Arjit–Etios–Ice hockey
 (D) Anil–Ferrari–Snooker
 (E) None of true

15. Who likes Honda?

- (A) Rohit (B) Arpit
 (C) Ravi (D) Raman
 (E) Ritesh

Direction (Q. 16-18): Following questions are based on the information provided below:

'A × B' means 'A is mother of B'.

'A – B' means 'A is brother of B'.

'A + B' means 'A is sister of B'.

'A ÷ B' means 'A is father of B'.

16. Which of the following means 'X' is maternal uncle of 'Z'?

- (A) $X - Y \times Z$ (B) $X + Y \times Z$
(C) $Z \times Y - X$ (D) $Z + Y \div X$
(E) None of these

17. Which of the following means 'K' is paternal grandfather of 'M'?

- (A) $K - L \div M$ (B) $K \div L - M$
(C) $K \div L \div M$ (D) $M \div L \div K$
(E) None of these

18. How is C related to A in $A \div B - C$?

- (A) Son
(B) Daughter
(C) Nephew
(D) Cannot be determined
(E) None of these

19. The rank of Abhijeet from the top is 10th and 18th from the bottom. How many students are there in the class?

- (A) 27 (B) 28
(C) 29 (D) 30
(E) None of these

20. Sanjana remembers that the birthday of his brother falls after August 15 but before August 18 while her sister remembers that the birthday of his brother falls after August 16 but before August 19. What is the birthday of brother of Sanjana?

- (A) August 16 (B) August 18
(C) August 19 (D) August 17
(E) None of these

Direction (Q. 21–25): In this question two/three statements followed by two conclusions numbered I and II have been given. You have to take the given statements to be true even if they seem to be at variance with commonly known facts and then decide which of the given conclusions logically follows from the given statements disregarding commonly known facts.

- (A) Only conclusion I is true
(B) Neither conclusion I nor II is true
(C) Only conclusion II is true
(D) Both conclusions I and II are true
(E) Either conclusion I or II is true

21. Statement:

No flower is a tree.

All leaves are trees.

Some garden are leaves.

Conclusions:

I. No leaves is a flower.

II. At least some garden are trees.

22. Statements:

Some movie are actor.

Some actor are director.

Conclusions:

I. Some director are definitely not actor.

II. Some director being movie is a possibility.

23. Statements:

Some hills are Mountains.

No Mountains is a valley.

All valley are River.

Conclusions:

I. At least some River are Mountains.

II. No valley is a hills.

24. Statements:

Some teachers are students.

All students are friends.

Some friends are parents.

Conclusions:

I. All teachers being friends is a possibility.

II. All friends are students.

25. Statements:

Some America are Japan

All Japan are China.

Some China are Vietnam.

Conclusions:

I. At least some China are America.

II. No Vietnam is America.

Direction (Q. 26-30): Read the following information carefully and answer the given questions.

(i) Eight persons A, B, C, D, P, Q, R, and S are seated around a square table- two on each side.

(ii) There are three lady members and they are not seated next to each other.

(iii) Q is between S and B.

(iv) C is between P and B.

(v) D, a lady member, is second to the left of Q.

(vi) B, a male member, is seated opposite to A, a lady member.

(vii) Q is not a female member.

26. Who among the following are the three lady members?

- (A) A, D and Q
(B) A, C and Q
(C) C, D and Q
(D) Cannot be Determined
(E) None of These

27. Which of the following is true about P?

- (A) P is a male member
(B) P is a female member
(C) Gender of P cannot be determined
(D) Position of P cannot be determined
(E) None of These

28. Which of the following is true about the person sitting between A and D?

- (A) a male member
(B) a female member
(C) The person sitting between A and D is R.
(D) Both (A) and (C)
(E) None of These

29. How many persons are sitting between R and B?

- (A) One
(B) Two
(C) Three
(D) Cannot be determined
(E) None of These

30. Who among the following is to the immediate left of B?

- (A) C
(B) Q
(C) P
(D) Cannot be Determined
(E) None of These

Direction (Q. 31-35): Study the following information carefully and answer the given questions.

Swati, Sanjana, Sujata, Sarita, Kanika, Kajal, Kirti and Kritika are sitting around a circular area at equal distance between each other, but not necessarily in the same order. Some of the persons are facing the center while some others are facing outside (ie in a direction opposite the center.)

Note: Same direction means that if one person is facing the center then the other person is also facing the center and vice versa. Opposite direction means that if one person is facing the center then the other person is facing outside and vice versa.

Kanika sits second to the right of Kirti. Kirti faces the center. Sanjana sits third to the left of Kanika. Kanika and Sanjana face opposite directions. Immediate neighbours of Sanjana face the center. Sujata sits second to the right of Sanjana. Kritika sits on the immediate left of Sujata. Swati sits second to the left of Sarita. Sarita faces the same direction as Sanjana. Sarita is not an immediate neighbour of Kirti. Immediate neighbors of Kanika face opposite directions (ie if one neighbour faces the center the other neighbour faces outside and vice versa).

31. Four of the following five are alike in a certain way based on the given seating arrangement and so form a group. Which is the one that does not belong to that group?

- (A) Kritika (B) Kajal
(C) Sujata (D) Swati
(E) Sarita

32. Who sits second to the left of Kritika?

- (A) Kirti
(B) Sanjana
(C) Kajal
(D) Other than those given as options
(E) Kanika

33. Which of the following is true regarding Kajal as per the given seating arrangement?

- (A) Kritika is one of the immediate neighbors

(B) Kajal sits third to the right of Kanika

(C) Kajal faces the center
(D) Only two persons sit between Kajal and Kirti.

(E) Only one person sits between Kajal and Swati?

34. What is Sujata's position with respect to Swati?

- (A) Second to the left
(B) Second to the right
(C) Third to the right
(D) Third to the left
(E) Fourth to the left

35. How many persons in the given arrangement face outside?

- (A) Three (B) Two
(C) Four (D) Five
(E) One

Direction (Q. 36 – 40): What should come in place of the question mark (?) in the following questions?

36. $18.5 \times 22.5 \times ? = 5161.5$

- (A) 13.5 (B) 11.4
(C) 16.5 (D) 12.4

(E) None of these

37. $8^{1.3} \times 4^{0.6} \times 16^{0.2} = 2^? - 27.32$

- (A) 33.12 (B) 31.22
(C) 22.33 (D) 23.33

(E) None of these

38. $(9)^2 + (12)^2 = (?)^2 - 11\%$ of 900

- (A) 21 (B) 15
(C) 25 (D) 18

(E) None of these

39. $(42)^2 \div \sqrt[3]{1728} = ?$

- (A) 48 (B) 124
(C) 142 (D) 151

(E) None of these

40. $\frac{(18 \times 15 - 20)}{(3.02 + 9.4) - 7.6} = \frac{? \times 25}{73 - 62}$

- (A) 22 (B) 24
(C) 20 (D) 32

(E) None of these

Direction (Q. 41-45): What approximate value will come in place of the question mark (?) in the given questions? Note : - You are not expected to calculate the exact value.

41. $2511.89 \div 9.88 + 54.91\%$ of 269.80 = ?

- (A) 800 (B) 500
(C) 400 (D) 700
(E) 300

NUMERICAL ABILITY

42. $32.23^2 \times 512^{\frac{1}{3}} \times 33.89^2 \div (2^9 \times 16.96^2) = 2^?$

- (A) 3 (B) 6
(C) 9 (D) 4
(E) 10

43. $?%$ of $(5280 \div 5.023 \times 9 \div 11) = 751.23$

- (A) 85 (B) 90
(C) 65 (D) 70
(E) 95

44. $? \times 5.342 \times 4.912 - 13.14 \times 4.01 \times 4 = 117$

- (A) 14 (B) 13
(C) 15 (D) 12
(E) 4

45. 31.05% of $(25.132)^2 - 65.432\%$ of $(19.91)^2 = ? - 33.3$

- (A) 32 (B) -32
(C) 99 (D) -99
(E) 42

46. In how many different ways can the letters of the word 'RIDDLED' be arranged?

- (A) 1680 (B) 840
(C) 2520 (D) 5040
(E) None of these

47. The average marks in Science subject of a class of 20 students is 68. If the marks of two students were misread as 48 and 65 instead of the actual marks 72 and 61 respectively, then what would be the correct average?

- (A) 68.5 (B) 69
(C) 69.5 (D) 70
(E) 66

48. Distance between two points A and B is 42 kms. A race was organized between Monu and Sonu from point A in which speed of them was 3 km/hr and 4 km/hr respectively. Sonu touch the point B starting from A and comes back quickly and meet Monu at point C. Find the distance between A and C. (in km)

- (A) 28 (B) 32
(C) 36 (D) 35
(E) 40

49. A lady had Rs. 36 and 90 paise in her bag and the total number of coins were 180. If there are two types of coins that is of 10 paise and 25 paise, then find the number of coins of 25 paise.

- (A) 130 (B) 128
(C) 120 (D) 126
(E) 125

50. Mithilesh started a business by investing Rs 48000. After 7 months, Vidya joined him with a capital of Rs 56000. At the end of the year of the total profit was Rs 5885. What is the Vidya's share of the profit?

- (A) Rs 3625 (B) Rs 1650
(C) Rs 1925 (D) Rs 3960
(E) None of these

51. The profit earned after selling an article for Rs 996 is the same as loss incurred after selling the article for Rs 894. What is the cost price of the article?

- (A) Rs 935 (B) Rs 905
(C) Rs 945 (D) Rs 975
(E) None of these

52. The simple interest accrued on an amount of Rs 84000 at the end of 3 yr is Rs 30240. What would be the compound interest accrued on the same amount at the same rate in the same period?

- (A) Rs 30013.95 (B) Rs 31013.95
(C) Rs 32013.95 (D) Rs 33013.95
(E) Rs 34013.95

53. What is the greater of two numbers whose product is 640, if the sum of the two numbers, exceeds their difference by 32?

- (A) 45 (B) 50
(C) 55 (D) 40
(E) None of these

54. If the CP is 10% less and S.P. is 10% more, profit will be double than that of earlier case. Find the actual C.P.

- (A) Rs. 100 (B) Rs. 180
(C) Rs. 120 (D) Rs. 160
(E) Can't be determined

55. Arun can row 6 km/hr in still water. When the river current is flowing at 1.2 km/hr, it takes him 1 hour to row to place and back. How far is the place ?

- (A) 3 km (B) 3.2 km
(C) 2.88 km (D) 2.58 km
(E) 2 km

56. A mixture of certain quantity of milk with 16 litres of water is worth Rs. 16 per litre. If pure milk be worth Rs. 21 per litre. How much milk is there in the mixture ?

- (A) 76.2 l (B) 61.5 l
(C) 65.3 l (D) 51.2 l
(E) 48.3 l

57. The radii of three circular pipes are 2, 3 and 4 cm respectively. The flow of water is proportionately equal to the square of the respective radius. If the three pipes can fill a tank in 72 minutes, then how much time, the 2nd pipe will take to fill the tank.

- (A) 3 hrs (B) 2 hr 57 min
(C) 3 hr 52 min (D) 4 hr
(E) None of these

58. Arun contains 6 red, 5 blue, 3 green and 2 yellow marbles. If 5 marbles are picked at random, what is the probability that at least 1 is blue ?

- (A) 95/107 (B) 87/118
(C) 23/109 (D) 93/104
(E) None of these

59. What is the ratio between the area of two squares made on the side and diagonal of a square having area equal to the area of a cube with side 24 cm ?

- (A) $\sqrt{3} : 1$ (B) $1 : \sqrt{3}$
(C) $1 : 2$ (D) $1 : \sqrt{2}$

(E) None of these

60. If 3 men or 4 women can do a certain work in 43 days, how long will 7 men and 5 women take to complete the same work ?

- (A) 12 days (B) 16 days
(C) 22 days (D) 27 days
(E) None of these

Direction (Q. 61 – 65): What should come in place of the question mark (?) in the following questions?

61. 45, 43, 83, 245, 975, 4869, ?

- (A) 29214 (B) 24501
(C) 19476 (D) 29207
(E) 30058

62. 31, 34, 71, 216, 867, 4338, ?

- (A) 26028 (B) 26031
(C) 21690 (D) 23150
(E) 23432

63. 16, 24, 60, 210, 945, 5197.5, ?

- (A) 33683.5 (B) 33685
(C) 32783.75 (D) 33783.75
(E) 33688.75

64. 16, 16, 40, 140, 840, 7980, ?

- (A) 163290 (B) 136290
(C) 132690 (D) 126390
(E) 123690

65. 26.5, 22.5, 36, 92, 343, 1679, ?

- (A) 10028 (B) 10025
(C) 10030 (D) 10026
(E) 10027

Direction (Q. 66-70): Study the table and answer the given questions:-

The following table gives some incomplete information on the runs scored by four players Aman, Babu, Chirag and Deepak in four different matches.

	Match I	Match II	Match III	Match IV	Total
Aman	75	80	—	85	—
Babu	65	—	60	—	—
Chirag	—	—	80	—	225
Deepak	95	—	65	70	—

(i) Aman's average score was 78.5

(ii) The average score in match I for all four players was 68.5.

(iii) Babu's average score for all four matches was 1.5 times of Chirag's runs in match I.

(iv) Babu and Deepak scored the same run in match IV. The average runs in match IV was same as the average runs in match I.

(v) The total runs scored in match II were 20 less than the total runs scored in match I by all four players

66. What is the difference between the total runs scored by Aman and Babu ?

- (A) 60 (B) 75
(C) 85 (D) 80
(E) None of these

67. The approximate average run scored by all four players in all four matches was ?

- (A) 70 (B) 65
(C) 67 (D) 62
(E) 75

68. Had Chirag got out on 50 in match III, then how much runs he must had to made in Match IV to score 120% of his present total runs ?

- (A) 102 (B) 124
(C) 150 (D) 90
(E) None of these

69. Approximately by how much percent the runs of maximum run scorer in match I is more than that of the lowest scorer in match IV ?
(A) 90 (B) 91.3 (C) 93.8 (D) 95 (E) 88.85
70. If in match V Aman made no run, then how much runs Babu have to make in order to equate his average score in all five matches with that of Aman ?
(A) 80 (B) 70 (C) 75 (D) 60 (E) None of these

ENGLISH LANGUAGE

Direction (Q. 71–80): Read the following passage carefully and answer the questions given below it. Certain words/phrases have been printed in bold to help you locate them while answering some of the questions.

Once upon a time, there was a royal elephant which used to reside in the premises of the king's palace. The elephant was very dear to the king, so he was well-fed and well treated. There was also a Dog who lived near the Elephant's shed. He was very weak and skinny. He was always fascinated by the smell of rich sweet rice being fed to the royal elephant. One day, the Dog could no longer **resist** the aroma of the rice and somehow managed to sneak into the Elephant's shed. He ate the grains of sweet rice that fell from the Elephant's mouth. He liked the rice so much, that he started going there daily to eat the rice. For days, the huge Elephant didn't notice the small dog as he was busy enjoying the delicious food. Gradually, the Dog grew bigger and stronger eating such rich food. Finally the Elephant noticed him and allowed him access to the food.

The Elephant enjoyed the company of the Dog and started sharing his food with him. They also started spending time with each other and soon became good friends. They ate together, slept together and played together. While playing, the Elephant would hold the Dog in his trunk and swing him back and forth. Soon neither of them was happy without the other. They became great friends and didn't want to be **separated** from each other.

Then one day, a man saw the Dog and asked the Elephant-keeper, "I want to buy this Dog. What price do you want for it?" The Elephant keeper didn't own the Dog but sold it and **extracted** a sum of money from this deal. The man took the Dog to his home village, which was quite far away. The King's Elephant became very sad after this incident. He missed his friend a lot and started neglecting everything. He didn't want to do anything without his dear friend, so he stopped eating, drinking and even bathing.

Finally, the Elephant-keeper reported this to the King; however he didn't mention anything about the Dog. The King had a wise minister, who was known for his keen understanding of animals. The King ordered the minister, "Go to the Elephant shed and find out the reason for the Elephant's condition". The intelligent minister went to the Elephant shed and found the Elephant very sad. He examined the Elephant and asked the Elephant keeper, "There is nothing wrong with this Elephant's body, then why does he look so sad ? I think this Elephant is grief stricken, possibly due to the loss of a dear friend. Do you know if this Elephant shared a close friendship with anyone ?

The Elephant-keeper said, "There was a Dog who used to eat, sleep and play with the Elephant. He was taken by a stranger three days ago". The minister went back to the King and said, "Your majesty, in my opinion, the royal Elephant is not sick, but he is lonesome without his dear friend, the Dog". The King said, "You're right, friendship is one of the most wonderful things of life. Do you know where that Dog is?"

The Minister replied, "Elephant keeper has informed me that a stranger took him away and he doesn't know his whereabouts". The King asked, "How can we bring back my Elephant's friend and make him happy again?" The Minister suggested, "Your Majesty, make a **declaration** that whoever has the dog that used to live at the royal Elephant's shed will be penalized". The King did the same and the man who had taken the dog, instantly turned him loose when he heard the proclamation. As soon as he was freed, the Dog ran back as fast as he could to the Elephant's shed. The Elephant was so delighted to see the Dog that he picked his friend up with his trunk and swung him back and forth. The Dog wagged his tail, while the Elephant's eyes sparkled with happiness. The King was content to see the Elephant happy once again and rewarded the Minister for his wise judgment.

71. What was the Minister's diagnosis of the Elephant's condition ?

- (A) The Elephant hated his keeper
(B) The Elephant was lonely
(C) The Elephant was starving
(D) The Elephant had hurt his leg and as in pain
(E) None of these

72. What method did the Minister suggest to the King to get back the Dog ?

- (A) To declare that whoever had that particular Dog would be punished
(B) To keep a bowl of rice for the dog in the Elephant's shed so that he could be lured back to the palace
(C) To command the Elephant keeper to look for the Dog in the village
(D) To persuade the Elephant to call out to the Dog
(E) None of these

73. Why had the Elephant become very sad ?
(A) He no longer got his daily bowl of rice
(B) He was unhappy with the King for having sold the Dog
(C) He missed his friend, the Dog
(D) He was sold to an unknown man by his keeper
(E) None of these
74. What did the Elephant-keeper do to the Dog ?
(A) He sold the Dog to an unknown man for a price
(B) He hit the Dog as the Dog was eating the Elephant's food
(C) He killed the Dog
(D) He complained to the King about the Dog
(E) None of these
75. Which of the following would be the most appropriate title for the passage ?
(A) Friends and Enemies
(B) The Playful Dog
(C) The King and the Minister
(D) The Elephant-keeper
(E) The Bond of Friendship
76. Why was the Elephant taken care of ?
(A) He was a very special Elephant as he could talk to Dogs
(B) He was a very loyal Elephant
(C) He was the strongest Elephant in the Kingdom
(D) He was weak and the King had a lot of sympathy for him
(E) None of these

Direction (Q. 77–78): Choose the word/group of words which is most similar in meaning to the word/group of words printed in bold as used in the passage.

77. DECLARATION

- (A) Pact (B) Praise (C) Announcement (D) Writ (E) Resolve

78. EXTRACTED

- (A) Pulled (B) Inserted (C) Wing (D) Dug out (E) Received

Direction (Q. 79–80): Choose the word/group of words which is most opposite in meaning to the word/group of words printed in bold as used in the passage.

79. SEPARATED

- (A) Stuck (B) United (C) Estranged (D) Bound (E) Joined

80. RESIST

- (A) Give in (B) Please (C) Struggle (D) Try out (E) Defy

Direction (Q. 81- 85): Read each sentence to find out whether there is any grammatical error in it. The error, if any, will be one part of the sentence. The number of that part is the answer. If there is no error, the answer is (E). (ignore the errors of punctuation, if any.)

81. He has taken care to (A)/ compliance with the norms (B)/ so he expects the proposal (C)/ to be approved without delay. (D)/ No error (E)
82. We have received many (A)/ of the letters from customers (B)/ asking us to extend (C)/ the deadline to repay their loans. (D)/ No error (E)
83. The government has (A)/ launched many creative schemes (B)/ to make banking services (C)/ available to everyone. (D)/ No error (E)
84. Our equipment gets damage (A)/ very often in summer (B)/ because there are (C)/ frequent power cuts. (D)/ No error (E)
85. Since I had lived there (A)/ for many years the villagers (B)/ were very comfortable talked (C)/ to me about their problems. (D)/ No error (E)

Direction (Q. 86- 90): The Following questions have two blanks, each blank indicating that something has been omitted. Choose the set of words for each blank that best fits the meaning of the sentence as a whole.

86. The move to allow dumping of mercury _____ an outcry from residents of the area who _____ that high levels of mercury will affect their health and destroy ecologically sensitive forest area.
(A) resulted, insist (B) provoked, fear (C) incited, determined
(D) activated, accept (E) angered, believe
87. Even as the _____ elsewhere in the world are struggling to come out of recession, Indian consumers are splurging on consumer goods and to _____ this growth, companies are investing heavily in various sectors.
(A) economies, meet (B) countries, inhibit (C) governments, measure
(D) nations, inflict (E) companies, counter

88. _____ has been taken against some wholesale drug dealers for dealing in surgical items without a valid licence and maintaining a stock of _____ drugs.
(A) Note, overwhelming (B) Step, impressive (C) Execution, outdated
(D) Action, expired (E) Lawsuit, invalid
89. Many people _____ genetically modified food but the reality is that all the food that we eat has been genetically modified naturally by thousands of years of _____.
(A) praise, manipulation (B) grow, mismanagement (C) criticize, farming
(D) avoid, experience (E) condemn, abuse
90. Centre should _____ ministries whose functions _____ with the state ministries to save money, deliver efficiency and avoid duplication of work.
(A) finish, differ (B) establish, contradict (C) constitute, matches
(D) abolish, overlap (E) block, vary

Direction (Q. 91-95): Rearrange the following six sentences (A), (B), (C), (D) and (E) in the proper sequence to form a meaningful paragraph and then answer the questions given below.

- A). Over the years, I have had the opportunities to observe and understand the thought processes behind the ads that have been flooding both the print and the TV media.
B). Although there is a huge shift in the quality of ads that we come across on a daily basis-- thanks essentially to improvement in technology--I somehow can't help but feel that the quality of communication of the message has become diluted.
C). Proportionally, the number of ads that lack in quality, have gone up exponentially as well!!
D). There is an increasing attempt by most companies to be seen as cool and funky.
E). Another reason could be the burgeoning number of companies, which means an exponential increase in the number of ads that are being made.

91. Which of the following would be the FOURTH sentence after rearrangement ?

- (A) E (B) D (C) C (D) A (E) B

92. Which of the following would be the FIFTH sentence after rearrangement ?

- (A) C (B) A (C) B (D) D (E) E

93. Which of the following would be the SECOND sentence after rearrangement ?

- (A) D (B) E (C) A (D) B (E) C

94. Which of the following would be the FIRST sentence after rearrangement ?

- (A) C (B) A (C) D (D) B (E) E

95. Which of the following would be the THIRD sentence after rearrangement ?

- (A) A (B) C (C) E (D) B (E) D

Direction (Q. 96- 100): In the following passage there are blanks, each of which has been numbered. These numbers are printed below the passage and against each, five words/ phrases are suggested, one of which fits the blank appropriately. Find out the appropriate word/phrase in each case.

Gujarat is one of the largest salt-producing states in India, which is the world's third-largest salt-producing country. Kharaghoda, 110 km from Ahmedabad, lies in the desert are of the arid Little Rann of Kutch. Here, the earth is so saline that salt is (96) by using solar (97) on subsoil brine. In other words, groundwater is laid out under the sun, evaporates, and (98) behind little piles of the white powder. Kolis (indigenous coastal fisherfolk), Dalits and Muslims from nearby village mine salt in this manner here. Work (99) begins after Navratri, when the rains are gone. Locals head to the salt fields deep within the desert, (100) small huts made of a few bamboo poles and some sacking, and get to work

96. (A) yield (B) harvested (C) produced (D) bred (E) manufactured

97. (A) hydration (B) distillation (C) evaporation (D) transformation (E) solidification

98. (A) delivers (B) abandons (C) gives (D) leaves (E) quits

99. (A) habitually (B) usually (C) sometime (D) although (E) whenever

100. (A) come up (B) held up (C) sum up (D) give up (E) prop up



Download IBT Andriod App
From Google Play Store

100+ Centers Across India

ANDHRA PRADESH

Amaravati : +91-83800-67785
Gachibowli : +91-94412-35252
Kadapa : +91-77994-88857
Visakhapatnam : +91-80087-78383

ASSAM

Guwahati(ZO) : +91-99547-00406
Nalbari : +91-99547-00406
Tinsukia : +91-81350-55680
Tezpur : +91-97079-28084

BIHAR

Bhagalpur : +91-72502-41882
Patna : +91-76778-84005
Purnia : +91-85788-76024

CHANDIGARH

Sec. 34 A : +91-86998-86998

CHATTISGARH

Raipur : +91-98260-03335

DELHI

Nirman Vihar : +91-93327-93327
South-Ex : +91-93101-32888
GTB Nagar : +9192506-50324
Laxmi Nagar : +91-99175-23169
Uttam Nagar : +91-88003-80066
Rohini : +91-98919-80983
Tilak Nagar : +91-85868-95131

GUJRAT

Ahmedabad : +91-76007-61929
Bhavnagar : +91-70698-18105
Godhra : +91-76983-16416
Navsari : +91-9898-144497

Rajkot : +91-93759-77257
Vadodara : +91-99044-05343

HARYANA

Faridabad : +91-98996-82494
Gurgaon : +91-99999-23890
Panchkula : +91-85570-25244
Rewari : +91-95416-46901
Rohtak : +91-99911-21264
Sonepat : +91-74042-60409

HIMACHAL PRADESH

Hamirpur : +91-98051-51212
Mandi : +91-98167-59903
Solani : +91-92180-22220
Una : +91-83518-27100

JAMMU & KASHMIR

Srinagar : +91-91030-33088

JHARKHAND

Jamshedpur : +91-97983-44605

KERALA

Adoor : +91-85938-39380
Calicut : 0495-2729288
Kochi : +91-94973-80417
Kochin : +91-94474-22452
Malappuram : +91-90370-07555
Pala : +91-85899-00666

MADHYA PRADESH

Gwalior : +91-95220-17072
Indore : +91-97703-21000
Ujjain : +91-97703-21000

MAHARASHTRA

Akola : +91-97670-84222

Andheri : +91-84240-42251
Aurangabad : +91-98238-64676
Baramati : +91-73505-40768
Nagpur(ZO) : +91-82370-40005

Nanded : +91-72180-09992
Nashik : +91-70303-88887
Pune : +91-70838-78383
Pune-Warje : +91-77760-72828
Sangli : +91-88888-00920
Thane : +91-93200-02811
Wardha : +91-94044-42906

ODISHA

Balasore : +91-97765-31265
Berhampur : +91-89840-64441
Bhubaneswar : +91-90909-77022
Cuttack : +91-77880-74377
Patrapada : +91-99372-09498
Puri : +91-99387-73617
Rourkela : 0661-6500501

PUNJAB

Amritsar : +91-98887-10660
Barnala : +91-82830-89447
Faridkot : +91-98147-86153
Jalandhar : +91-94636-12090
Kapurthala : +91-98157-87319
Kotkapura : +91-96462-13240
Ludhiana : +91-92163-80013
Mansa : +91-84278-74111
Moga : +91-82838-41077
Pathankot : +91-90418-76534
Sangrur : +91-98558-26805

RAJASTHAN

Ajmer : +91-92143-03003

Jaipur : +91-99505-08026
Jodhpur : +91-98292-39421

TAMIL NADU

Adambakkam : +91-90430-43132
ANNA NAGAR : +91-8220020021
Arumbakkam : +91-97919-38791
Tambaram : +91-99400-34201
Tiruvanmiyur : +91-9841401168
Coimbatore : +91-98422-97768
Tuticorin : +91-0461-2330137
Villupuram : +91-9383445556

TELANGANA

Secunderabad : +91-70958-82222
Warangal : +91-85008-98970

UTTAR PRADESH

Aligarh : +91-78305-07442
Allahabad : +91-81729-69180
Firozabad : +91-89580-00113
Kanpur : +91-85640-66551
Lalitpur : +91-98892-82158
Lucknow : +91-96702-26709
Rampur-Maniharan : +91-98970-76607
Varanasi : +91-97951-52374

UTTARAKHAND

Kashipur : +91-75008-28111

WEST BENGAL

Howrah : +91-98310-77979
Kolkata : +91-90884-79999
Malda : +91-98324-06455

IBT[®]
IBT INSTITUTE PVT. LTD

The Institute of Banking Training
(A Division of IBT Institute Pvt. Ltd)

Head Office:- SCO-117-118, Punjab Air Tower, Opp. Bus Stand Gate No. 3 Jalandhar
Help Line No. :- 0181-4606260,61,62,63; 094636-12090,090415-00546, 99670-29818

IPPB OFFICER SCALE - I (PRE) MOCK TEST - 1

<p>Q.No. 1 (A)</p> <p>D > E (True)</p> <p>B > E (false)</p>	<p>Q.No. 2 (B)</p> <p>S > P (False)</p> <p>N < S (True)</p>
<p>Q.No. 3 (D)</p> <p>V = S (False)</p> <p>Q > M (false)</p>	<p>Q.No. 4 (A)</p> <p>S > T (True)</p> <p>V ≥ Q (False)</p>

Q.No. 5 (A)

$E > W$ (True)
 $M > L$ (False)

Q.No. 6-10

Day	Person	Company
Monday	Anurag	B
Tuesday	Ajay	C
Wednesday	Aakash	D
Thursday	Ankit	A
Friday	Achash	E
Saturday	Anupam	F
Sunday	Anurag	G

Q.No. 6 (C)

Q-7 (A)
Q-8 (D)
Q-9 (E)
Q-10 (B)

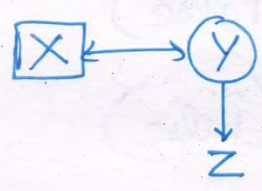
Q.No. 11-15

Snooker	Ice Hockey	Table Tennis
Ajith (Etios)	Anil (Ferrer) (Ice Hockey)	Arpit (Baleno)
Raman (Fiat)	Ritesh (Honda)	Ravi (Benz)
Robert (Draift)		

Q.No. 11 (C)

Q-12 (D)
Q-13 (B)
Q-14 (A)
Q-15 (E)

Q.No. 16 (A)



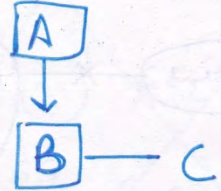
Q.No. 17

(C)



Q.No. 18

(D)



Q.No. 19

(A)

$$\begin{aligned}
 \text{Total students} &= (10 + 18) - 1 \\
 &= 28 - 1 \\
 &= 27
 \end{aligned}$$

Q.No. 20

~~(A)~~ (D)

August 17

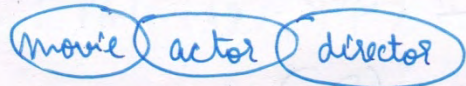
Q.No. 21

(D)

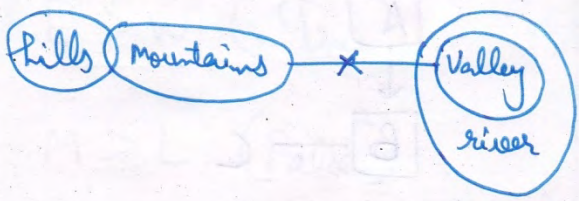


Q.No. 22

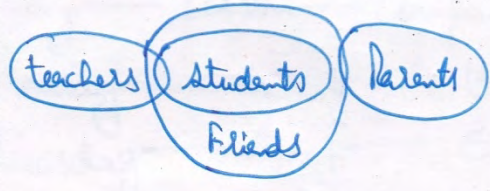
(C)



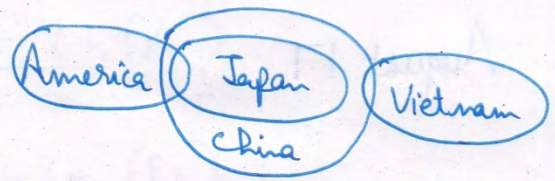
Q.No. 23 (B)



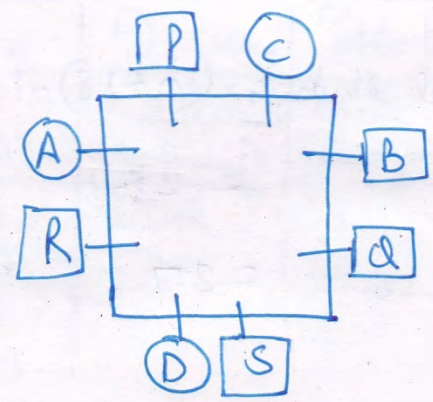
Q.No. 24 (A)



Q.No. 25 (A)



Q.No. 26-30



Q.No. 26-30 (E)

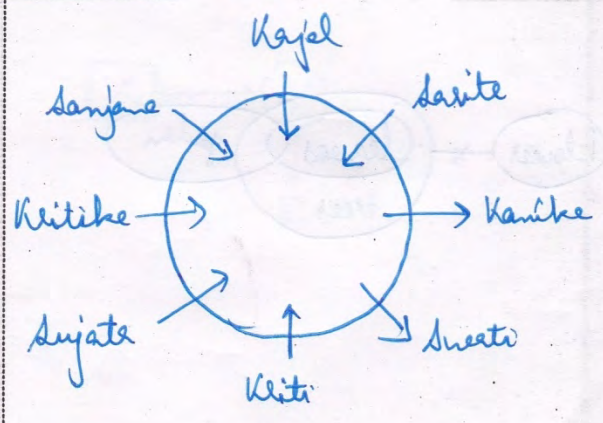
Q.27 (A)

Q.28 (D)

Q.29 (C)

Q.30 (B)

Q.No. 31-35



Q.No. 31 (D)
Q-32 (C)
Q-33 (C)
Q-34 (B)
Q-35 (B)

Q.No. 36 (D)

$$\frac{?}{416.25} = 51.615$$

$$= 12.4$$

Q.No. 37 (E)

$$(2)^{3.9} \times (2)^{1.2} \times (2)^{5.8} = (2)^{5.9} = 2^{? - 27.2}$$

$$\Rightarrow 5.9 = ? - 27.32$$

$$? = 33.22$$

Q.No. 38 (D)

$$81 + 144 = (?)^2 - 99$$

$$(?)^2 = 324$$

$$? = 18$$

Q.No. 39 (E)

$$1764 \div 12 = 147$$

<p>Q.No. 40 (A)</p> $\frac{270-20}{12.6-7.6} = \frac{25 \times ?}{11}$ $50 = \frac{25 \times ?}{11}$ $? = 22$	<p>Q.No. 41 (C)</p> $\frac{2500}{10} + \frac{55 \times 270}{100} = ?$ $\approx 250 + 148.5$ ≈ 400
<p>Q.No. 42 (B)</p> $(32)^2 \times 8 \times (34)^2 \div (2^9 \times 17^2) = 2^?$ $\frac{(2)^{10} \times (2)^3 \times 34 \times 32}{2^9 \times 17 \times 17}$ $2^1 \times 2^3 \times 2^2$ $\Rightarrow ? = 6$	<p>Q.No. 43 (A)</p> $? = \frac{750 \times 100}{\frac{5280}{5} \times \frac{9}{11}}$ ≈ 85
<p>Q.No. 44 (B)</p> $? \times 5 \times 5 - 13 \times 4 \times 4 = 117$ $? = \frac{325}{25}$ $= 13$	<p>Q.No. 45 (B)</p> $\frac{31}{100} \times 25 \times 25 - \frac{65}{100} \times 20 \times 20 = ? - 33$ $193.75 - 260 + 33 = ?$ ≈ -32

Q.No. 46

(B)

$$\begin{aligned} \text{Total No. of ways} &= \frac{7!}{3!} \\ &= 7 \times 6 \times 5 \times 4 \\ &= 840 \end{aligned}$$

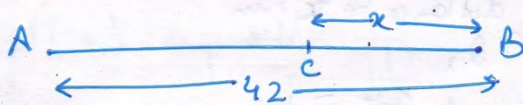
Q.No. 47

(B)

$$\begin{aligned} \text{Inc. in total marks after collection} &= (72+61) - (48+65) = 20 \\ \text{No. inc in avg.} &= \frac{20}{20} = 1 \\ \text{i.e. New avg.} &= 69 \end{aligned}$$

Q.No. 48

(C)



A.P.O.

$$\frac{42+x}{4} = \frac{42-x}{3}$$

$$\text{or } x = 6 \text{ km.}$$

$$\begin{aligned} \text{Distance b/w A \& C} &= 42 - 6 \\ &= 36 \text{ km} \end{aligned}$$

Q.No. 49

(D)

A.P.O. \rightarrow

$$\begin{aligned} 10x + 25y &= 3690 \\ [8x + y = 180] \times 10 \end{aligned}$$

$$15y = 1890$$

$$y = 126 \text{ coins.}$$

Q.No. 50

(C)

$$\text{Capital ratio} = \frac{48000 \times 12}{56000 \times 5} = \frac{72}{35}$$

$$\begin{aligned} \text{Vidya's share} &= \frac{35}{107} \times 5885 \\ &= 1925 \end{aligned}$$

Q.No. 51

(C)

Let C.P. = x

A.P.O.

$$996 - x = x - 894$$

$$\Rightarrow x = 945$$

Q.No. 52 (E)

$$x = \frac{30240 \times 100}{84000 \times 3} = 12\%$$

$$\therefore CI = P \left[\left(1 + \frac{12}{100} \right)^3 - 1 \right]$$

$$= 34013.952$$

Q.No. 53 (D)

Let no. of boys x & y

$$x \times y = 640$$

$$\text{and } x + y = 32 + x - y$$

$$\Rightarrow y = 16$$

$$\therefore x = \frac{640}{16} = 40$$

Q.No. 54 (E)

Let actual C.P be C & actual S.P is S
So, new C.P = $0.9C$ & new S.P = $1.1S$

$$\text{Actual P\%} = \frac{S - C}{S} \times 100$$

$$\text{new P\%} = \frac{1.1S - 0.9C}{0.9C} \times 100$$

But this data is insufficient to calculate C.P.

Q.No. 55 (C)

Let distance be x km

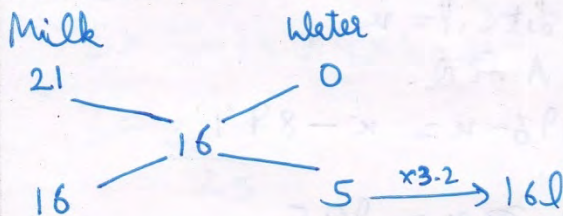
A.P.D,

$$\frac{x}{6+1.2} + \frac{x}{6-1.2} = 1$$

$$\frac{x}{7.2} + \frac{x}{4.8} = 1$$

$$\Rightarrow x = 2.88 \text{ km}$$

Q.No. 56 (D)



$$\text{Ratio} = 16 : 5$$

$$\therefore \text{quantity of milk} = \frac{16}{5} \times 3.2$$

$$= 51.2 \text{ L}$$

Q.No. 57 (C)

ratio ratio $\rightarrow 2 \quad 3 \quad 4$

efficiency ratio $\rightarrow 4 \quad 9 \quad 16$

$$\text{Total work} = 29 \times 72$$

$$\therefore \text{Time taken by 2nd pipe} = \frac{29 \times 72}{9}$$

$$= 232$$

$$= 3 \text{ hrs. } 52 \text{ min}$$

<p>Q.No. 58 (D)</p> $n(S) = {}^{16}C_5 = 4368$ $n(E) \text{ when there is no blue ball} = {}^{15}C_5 = 462$ $\text{Reqd. P} = 1 - \frac{462}{4368} = \frac{3906}{4368}$ $= \frac{93}{104}$	<p>Q.No. 59 (C)</p> <p>Ratio of side and diagonal = $1 : \sqrt{2}$</p> <p>Ratio of area = $(1)^2 : (\sqrt{2})^2$</p> $= 1 : 2$
<p>Q.No. 60 (A)</p> <p>1 Man's 1 day work = $\frac{1}{43 \times 3}$</p> <p>1 Woman's 1 day work = $\frac{1}{43 \times 4}$</p> <p>\therefore 7 m & 5 w work in 1 day = $\frac{7}{43 \times 3} + \frac{5}{43 \times 4}$</p> $= \frac{1}{12}$ <p>So work will be completed in 12 days.</p>	<p>Q.No. 61 (D)</p> $45 \times 1 - 2 = 43$ $43 \times 2 - 3 = 83$ $83 \times 3 - 4 = 245$ $245 \times 4 - 5 = 975$ $975 \times 5 - 6 = 4869$ $4869 \times 6 - 7 = 29207$
<p>Q.No. 62 (B)</p> $31 \times 1 + 3 = 34$ $34 \times 2 + 3 = 71$ $71 \times 3 + 3 = 216$ $216 \times 4 + 3 = 867$ $867 \times 5 + 3 = 4338$ $4338 \times 6 + 3 = 26031$	<p>Q.No. 63 (D)</p> $16 \times 1.5 = 24$ $24 \times 2.5 = 60$ $60 \times 3.5 = 210$ $210 \times 4.5 = 945$ $945 \times 5.5 = 5197.5$ $5197.5 \times 6.5 = 33783.75$

Q.No. 64 (E)

$$16 \times 1 = 16$$

$$16 \times 2.5 = 40$$

$$40 \times 3.5(1+2.5) = 140$$

$$140 \times 6 [3.5+2.5] = 840$$

$$840 \times 9.5 [3.5+6] = 7980$$

$$7680 \times 15.5 [9.5+6] = 123690$$

Q.No. 65 (B)

$$26.5 \times 1 - 2^2 = 22.5$$

$$22.5 \times 2 - 3^2 = 36$$

$$36 \times 3 - 4^2 = 92$$

$$92 \times 4 - 5^2 = 343$$

$$343 \times 5 - 6^2 = 1679$$

$$1679 \times 6 - 7^2 = 10025$$

Q.No. 66 (D)

	I	II	III	IV	Total
Aman	75	80	74	85	314
Babu	65	39	60	70	234
Chitlag	39	57	80	49	225
Deepak	95	78	65	70	308

Q.No. 67 (C)

$$\text{Avg} = \frac{1081}{16} \approx 67.5625$$

Reqd. diff. = $314 - 234$
= 80

Q.No. 68 (B)

$$\text{Reqd. runs} = (120\% \text{ of } 225) - (39 + 57 + 50)$$

$$= 270 - 146$$

$$= 124 \text{ runs.}$$

Q.No. 69

$$\text{Reqd. \%} = \frac{95 - 49}{49} \times 100$$

$$\approx 93.8\%$$

Q.No. 70	(A)	Q.No.	Q.No.
<p>To make avg runs equal to Hd of Amar, Babu must have to score $314 - 234 = 80$ runs.</p>			

IPPB OFFICER SCALE - I (PRE) MOCK TEST - 1**ANSWER KEY**

1(A)	2(B)	3(D)	4(A)	5(A)	6(C)	7(A)	8(D)	9(E)	10(B)
11(C)	12(D)	13(B)	14(A)	15(E)	16(A)	17(C)	18(D)	19(A)	20(D)
21(D)	22(C)	23(B)	24(A)	25(A)	26(E)	27(A)	28(D)	29(C)	30(B)
31(D)	32(C)	33(C)	34(B)	35(B)	36(D)	37(E)	38(D)	39(E)	40(A)
41(C)	42(B)	43(A)	44(B)	45(B)	46(B)	47(B)	48(C)	49(D)	50(C)
51(C)	52(E)	53(D)	54(E)	55(C)	56(D)	57(C)	58(D)	59(C)	60(A)
61(D)	62(B)	63(D)	64(E)	65(B)	66(D)	67(C)	68(B)	69(C)	70(A)
71(B)	72(A)	73(C)	74(A)	75(E)	76(E)	77(C)	78(E)	79(B)	80(A)
81(B)	82(B)	83(E)	84(A)	85(C)	86(B)	87(A)	88(D)	89(C)	90(D)
91(A)	92(A)	93(D)	94(B)	95(E)	96(C)	97(A)	98(D)	99(B)	100(E)

- 81.** (B) Replace 'compliance' with 'comply'
82. (B) Delete 'of the'
83. (E) No error
84. (A) Instead of 'damage' it should be 'damaged'
85. (C) Instead of 'talked' it should be 'talking'